

## EMPLOYMENT OBSERVATORY

### Profile of the unemployed job-seekers in the city of Alzira (March 2020). TOTAL Unemployed **job-seekers**: 3.793

Chart 1. Proportion of men and women job-seekers (number and percentage of the total)

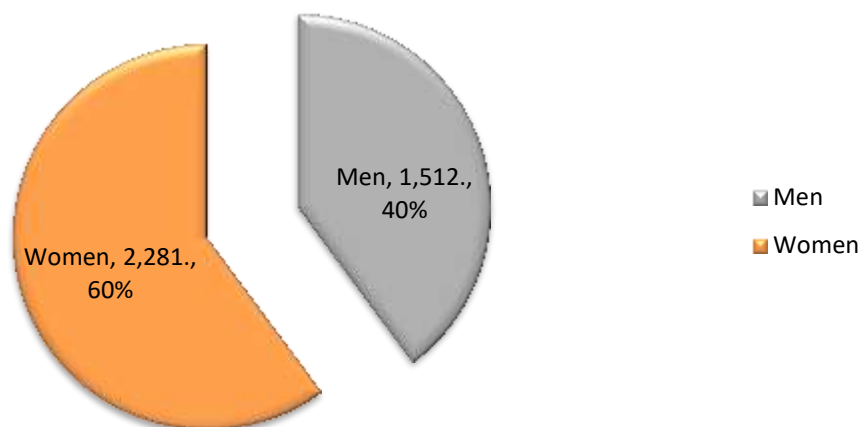
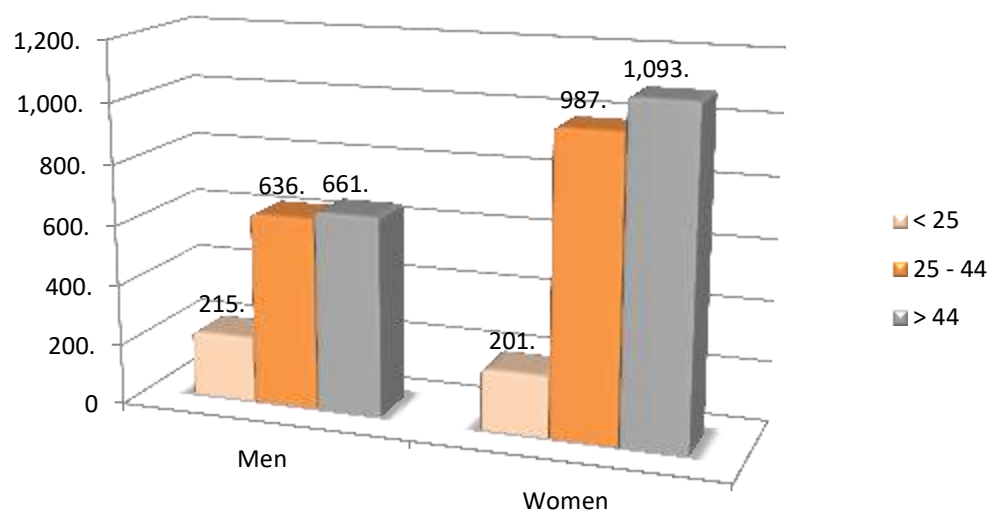
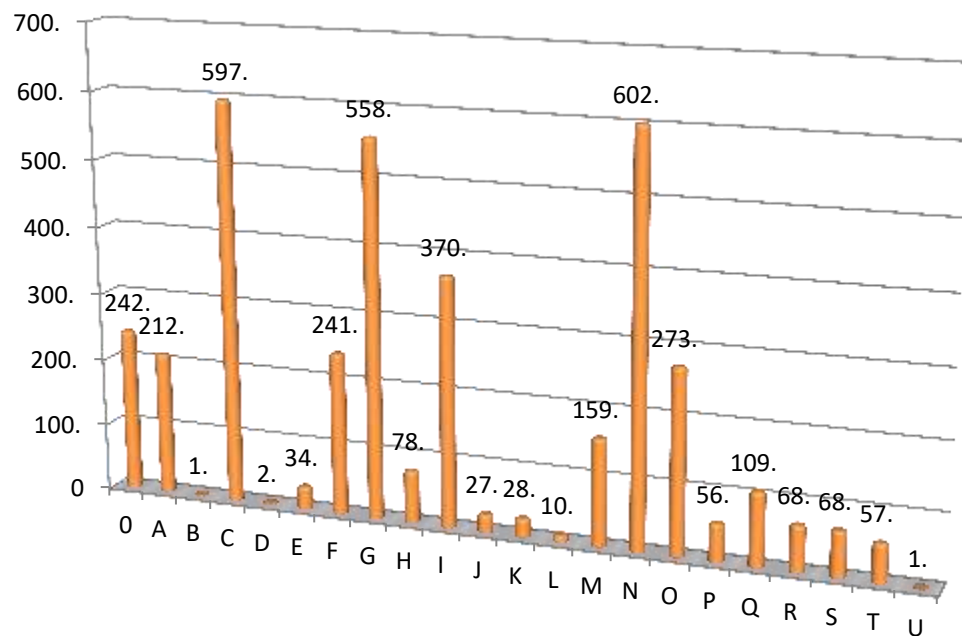


Chart 2. Unemployed job-seekers by gender and age

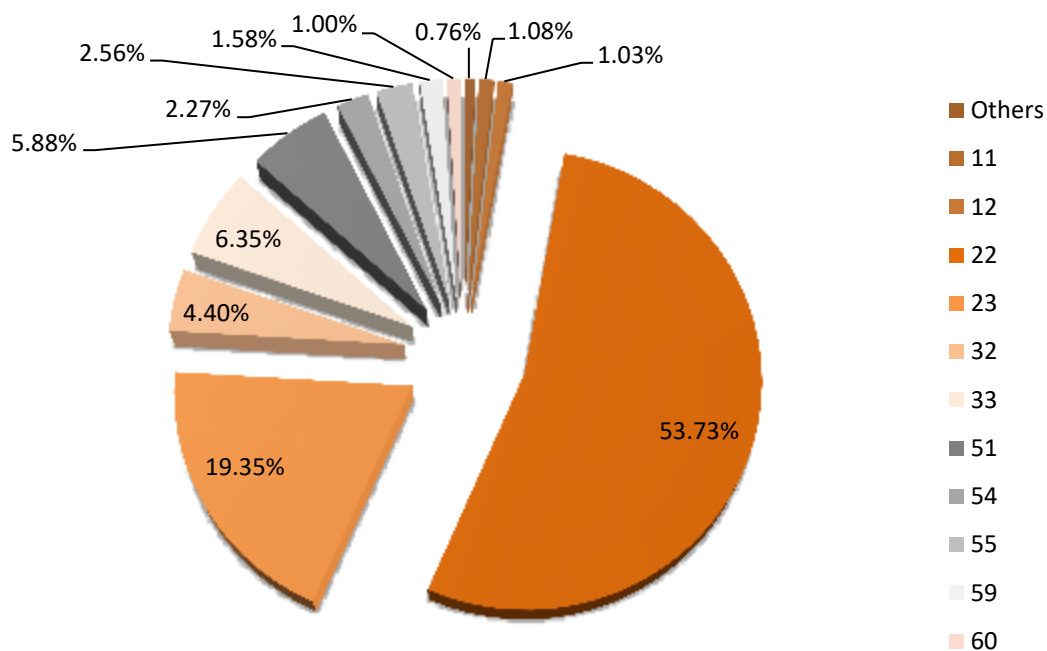


**Graph 3. Distribution of unemployed/jobseekers by economic activity**



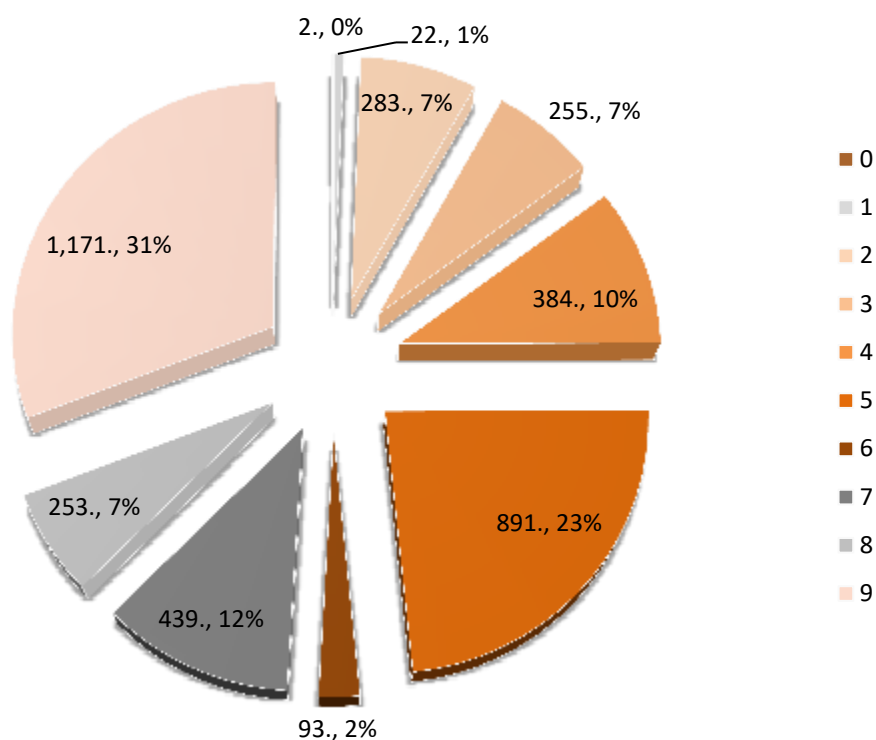
Economic activities (CNAE, 2009)	
0	WITHOUT ECONOMIC ACTIVITY
A	AGRICULTURE, -LIVESTOCK FARMING, FORESTRY AND FISHERY
B	EXTRACTIVE INDUSTRIES
C	MANUFACTURING INDUSTRY
D	ELECTRICITY, GAS, STEAM AND AIR CONDITIONING SUPPLY
E	WATER SUPPLY; SEWERAGE, WASTE MANAGEMENT AND REMEDIATION ACTIVITIES
F	CONSTRUCTION
G	WHOLESALE AND RETAIL TRADE; REPAIR OF MOTOR VEHICLES AND MOTORCYCLES
H	TRANSPORT AND STORAGE
I	ACCOMMODATION AND FOOD SERVICE ACTIVITIES
J	INFORMATION AND COMMUNICATIONS
K	FINANCIAL AND INSURANCE ACTIVITIES
L	REAL ESTATE ACTIVITIES
M	PROFESIONAL, SCIENTIFIC AND TECHNICAL ACTIVITIES
N	ADMINISTRATIVE AND SUPPORT SERVICE ACTIVITIES
O	PUBLIC ADMINISTRATION AND DEFENSE; COMPULSORY SOCIAL SECURITY
P	EDUCATION
Q	HUMAN HEALTH AND SOCIAL WORK ACTIVITIES
R	ARTS, ENTERTAINMENT AND RECREATION
S	OTHER SERVICES ACTIVITIES
T	ACTIVITIES OF HOUSEHOLDS AS EMPLOYERS; UNDIFFERENTIATED GOODS- AND SERVICES-PRODUCING ACTIVITIES OF HOUSEHOLDS FOR OWN USE
U	ACTIVITIES OF EXTRATERRITORIAL ORGANISATIONS AND BODIES

**Chart 4. Distribution of job-seekers by level of education and training.**



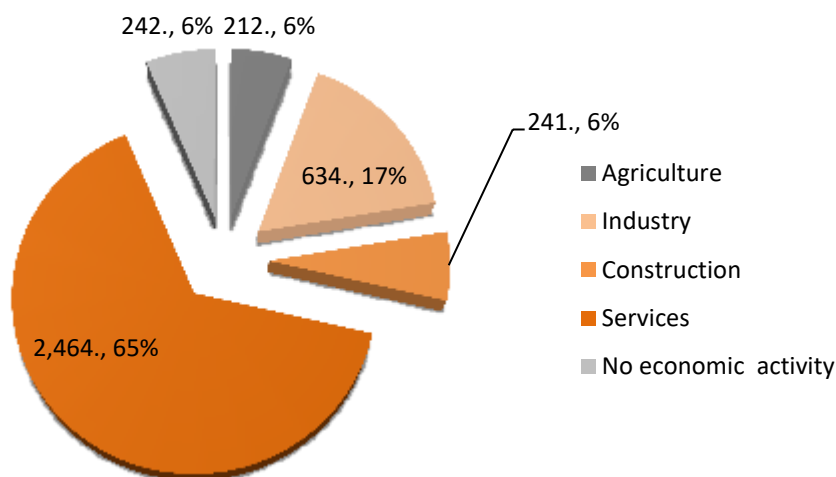
Level of education and training (CNAE, 2009)		Individuals	%
<b>Others</b>	WITHOUT STUDIES, TRAINING AND JOB INSERTION PROGRAMMES, INTERMEDIATE GRADE OF MUSIC AND DANCE, UNIVERSITY's SPECIAL DEGREES AND OWN TITLES, PROFESSIONAL SPECIALISATION, PhD	24,	0,70%
<b>11</b>	INCOMPLETE PRIMARY STUDIES	34,	0,99%
<b>12</b>	COMPLETE PRIMARY STUDIES	31,	0,90%
<b>22</b>	MANDATORY SECONDARY EDUCATION WITHOUT CERTIFICATE OR EQUIVALENT.	1.873,	54,67%
<b>23</b>	CERTIFICATE OF COMPULSORY SECONDARY OR EQUIVALENT	645,	18,83%
<b>32</b>	GENERAL CERTIFICATE OF SECONDARY SCHOOL (HIGH SCHOOL DEGREE)	149,	4,35%
<b>33</b>	UNDERGRADUATE CERTIFICATE IN HIGHER EDUCATION IN SPECIFIC PROFESSIONAL TRAINING IN PLASTIC ARTS, DESIGN AND SPORTS	220,	6,42%
<b>51</b>	GRADUATE CERTIFICATE IN HIGHER EDUCATION EDUCATION OF IN SPECIFIC PROFESSIONAL TRAINING AND EQUIVALENTS IN PLASTIC ARTS, DESIGN AND SPORTS	191,	5,58%
<b>54</b>	UNIVERSITY DEGREE OF 1ST CYCLE AND EQUIVALENTS OR PERSONS WHO HAVE COMPLETED AT LEAST 3 COURSES OF A BACHELOR DEGREE OF LICENSE OR EQUIVALENT CREDITS ( 3-YEARS CYCLE OF POST-SECONDARY EDUCATION)	75,	2,19%
<b>55</b>	UNIVERSITY DEGREE OF 1ST AND 2ND CYCLE; SECOND CYCLE-ONLY AND EQUIVALENT. (4-YEARS CYCLE OF POST SECONDARY EDUCATION, 240 ECTS)	86,	2,51%
<b>59</b>	GRADO UNIVERSITARIA: UNIVERSITY DEGREE EQUIVALENT TO 240 ECTS (4-YEAR POST-SECONDARY EDUCATION)	55,	1,61%
<b>60</b>	HIGHER EDUCATION UNIVERSITY MASTER's DEGREE	40,	1,17%
<b>TOTAL</b>		<b>3.426</b>	<b>100%</b>

**Graph 5. Distribution of job-seekers by occupational group**



Main occupational groups (CNAE 2009)
0 Military occupations
1 Directors and managers
2 Technicians; scientific and intellectual professionals
3 Technicians and associate professionals
4 Accounting, administration and other office employees
5 Catering personal; Personal and protective services workers; Market sales workers
6 Skilled agricultural, fishery, livestock and forestry workers;
7 Craft and skilled workers of the manufacturing and construction industries (Installation and machinery operators and assemblers)
8 Installation and machinery operators and assemblers
9 Elementary occupations

**Graph 6. Proportion by economic sectors**



#### Summary of the profile of the unemployed (March 2020)

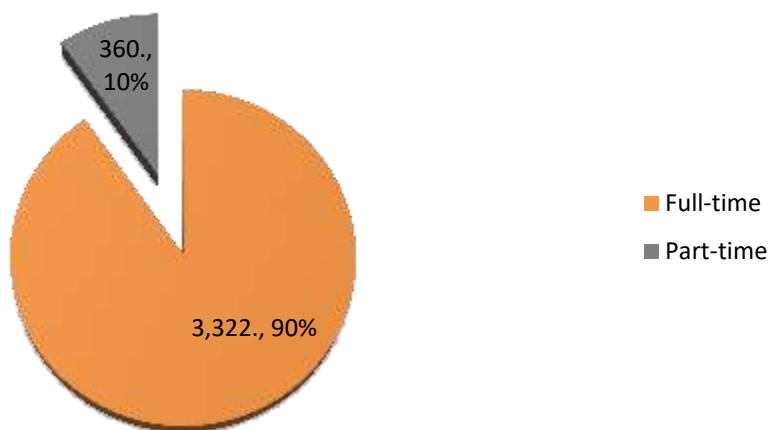
- **3.793** people are unemployed in March (40% men, 60% women). The job-seeker profile with the highest unemployment rate (53,73%) matches with lower education background group (high school graduate without graduate degree or equivalent). It is followed by people with a graduate degree or equivalent (19,35%). Subsequently, come the following education background groups: undergraduate degrees (6,35%); higher education (5,88%) in specific vocational training, plastic art and design and sports. Finally, unemployed job-seekers with higher education degree (academic and master's degrees) represent a minority (1.58% and 1%, respectively).
- These data confirm that the service sector is by far the one with the highest of unemployment rate (65%), followed by industry (17%).
- More into details, the results of March 2020 sorted by employment groups shows that the category of elementary occupations represent the great bulk of unemployed people profile (31%), followed by catering, personal and protective services workers, and sellers (23%).

## PROFILE OF REGISTERED **EMPLOYMENT** CONTRACTS

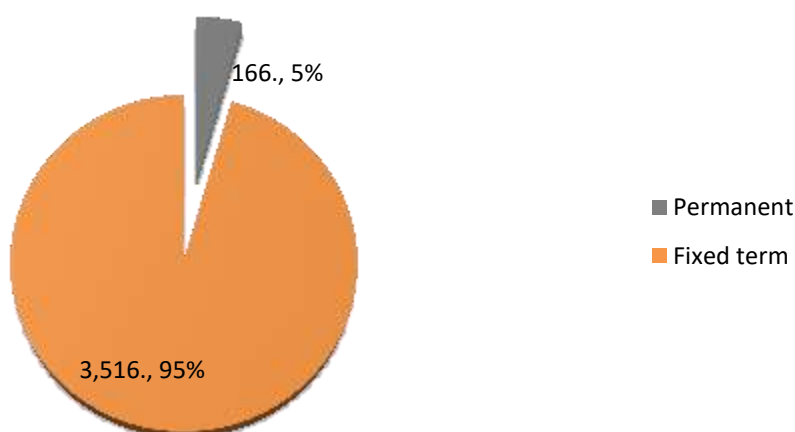
Profile of the **employment** contracts signed in the city of Alzira (March 2020)

**TOTAL contracts: 3.682**

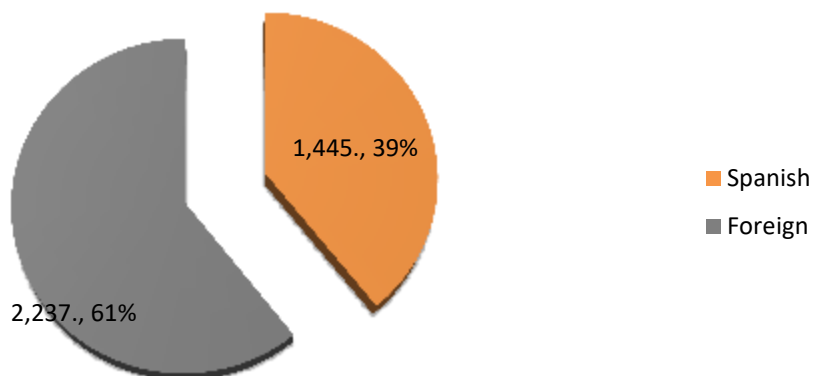
Graph 7. By type of working day



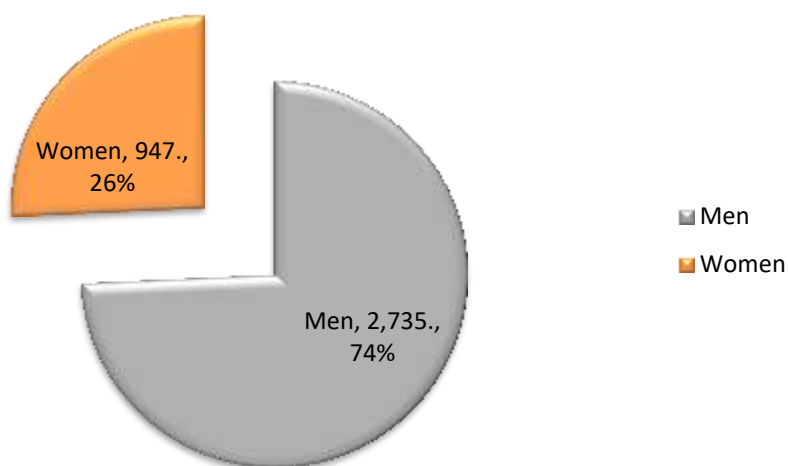
Graph 8. By type of contract



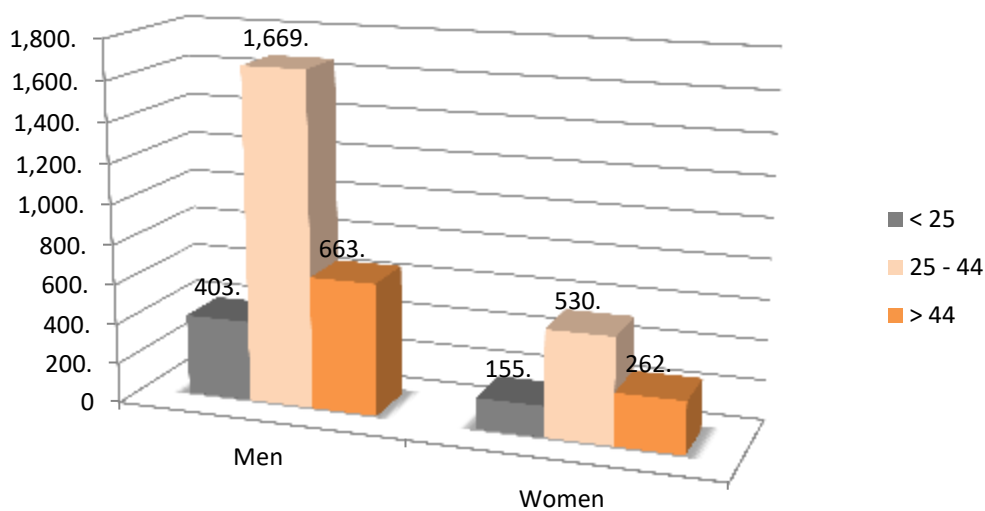
**Graph 9. By nationality.**



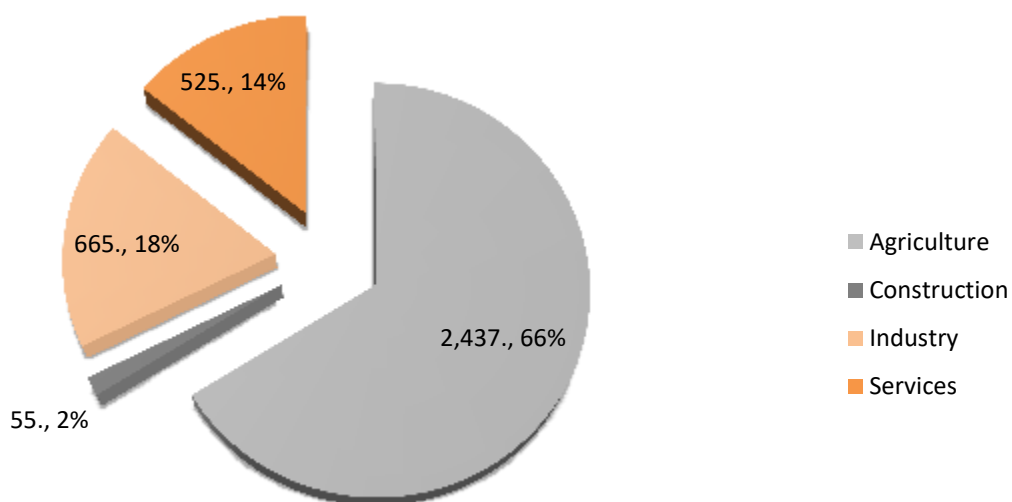
**Graph 10. By gender.**



**Graph 11. By age and gender.**

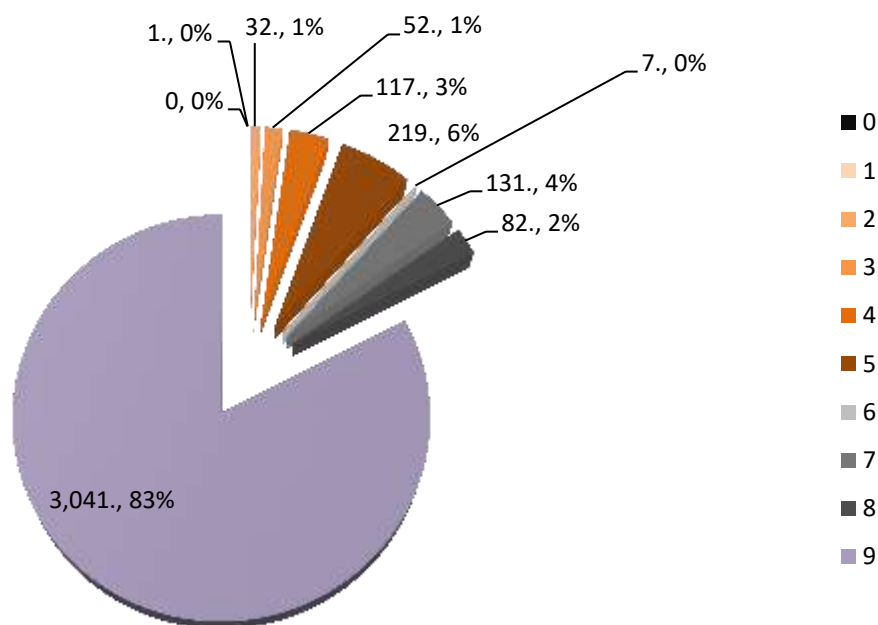


**Graph 12. By activity sectors.**





**Graph 13. Proportion by employment groups.**



**Legend of the LABORA occupation groups (CNAE 2009)**

Group of the main occupation
0 Military occupations
1 Directors and managers
2 Technicians and scientific and intellectual professionals
3 Technicians; support professionals
4 Accounting, administrative and other office employees
5 Restoration, personal, protection and seller service workers
6 Qualified workers in the agricultural, livestock, forestry and fishing sectors
7 Craftsmen and skilled workers of the manufacturing and construction industries (except operators of facilities and machinery)
8 Operators of facilities and machinery, and assemblers
9 Elemental occupations

#### **Summary of the profile of the people hired (March 2020)**

- 3.682 people were hired in the month of March (74% men, 26% women). It was a great majority of fixed-term contracts (95%).
- The agriculture sector is the one that recruited the most (66%), followed by industry (18%), the services (14%) and building (2%).
- Deeper into details, the highest rate of job position offered was in the field of elemental occupations 83%, followed by restoration, personal, protection and seller service workers for 5%.